



# ATLAS

SINCE 1919

 116,845 - 125,663 lbs

 313 HP

EU Stage V

 59' 5" - 71' 10"

## FAST. RELIABLE. VERSATILE.



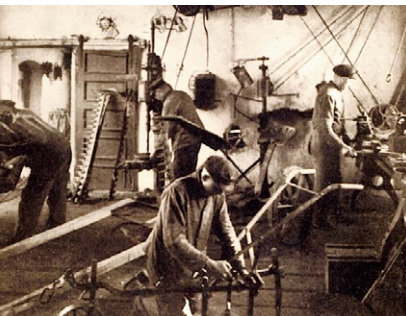
# MATERIAL HANDLING MACHINE 520MH

[WWW.ATLASGMBH.COM](http://WWW.ATLASGMBH.COM)

# ATLAS – CONSTRUCTION MACHINERY MANUFACTURER WITH TRADITION

## From person to person

When Hinrich Weyhausen started selling construction and agricultural machinery in 1919, he discovered that the machines which his customers actually needed were not available. So he listened to them carefully and went about building the machines himself – exactly according to the requirements of the people who used his machines every day. He carried out pioneering work with a passion under the brand name of Atlas. His focus was always on the benefit of the machines. And nothing has changed for us in terms of this ideal today.



**Atlas will make you strong  
with excellent products and  
a comprehensive service.**



With highly motivated employees, a great deal of commitment and expertise ATLAS GmbH develops successful crane & excavator technologies. Numerous customers, engineers and experts all around the globe have made their contribution. The result is robust equipment to enable you to work more effectively and safely than ever before.

As our know-how grew, so too did our dealer and service network worldwide.

We can hence guarantee – in those days and today too – that we will always be on the spot when you need us.



Atlas manufactures a wide range of equipment for the construction, railroad, material handling and infrastructure industries. You will find more information on Atlas under [www.atlasgmbh.com](http://www.atlasgmbh.com).

## CONSTRUCTION



## TRANSPORT



## INFRASTRUCTURE



## RECYCLING



# CUSTOMER SATISFACTION IS OUR PRIORITY!

## WE ARE COMMITTED

to providing our customers with highest quality products and services.

## QUALITY STANDARDS AND CUSTOMER SATISFACTION

are measured in terms of service performance, reliability, relevance and timeliness.

## OUR COMPANY'S MISSION, GOALS AND OBJECTIVES

are directed towards ongoing process improvement as a basis for strengthening our competitive position and for improving product quality and service standards.

## QUALITY STANDARDS AND CUSTOMER SATISFACTION

are measured in terms of product performance and reliability.

# PRODUCT RANGE

## 520MH





**EXTENSIVE DEALER NETWORK  
EXCELLENT SERVICE  
CUSTOMER FOCUSED**

# ATLAS - The new excavator cabin



The new ATLAS cabin –  
Best climate, sharp  
display, digital and direct,  
more space, best view, extre-  
mely quiet, feel good

Clear control panel –  
Direct selection via keys or digital  
control via button.....



Move safely: Standard lateral-  
and rear view cameras



Most powerful air conditioning system  
- short airways - large lines -  
cross sections - silent



Best view – especially to the right



# ATLAS SINCE 1939 - The new excavator cabin

Stay communicated - radio with USB connection - mobile phone tray by the left joystick



Easy: Upper carriage lock at the push of a button on T



Bottle holder near the driver



Lunch break - space for cool box with electrical connection - behind the driver's seat



Floor non-slip and Easy to sweep - storage space for tools and materials



# TECHNICAL SPECIFICATION 520MH

## ENGINE

Power rating..... 313 HP	Bore / cylinder stroke ..... 101 / 136	<b>STANDARD BASIC EQUIPMENT:</b>
RPM ..... 1800 rpm	Cooling system ..... Water-cooled	• Automatic idling system / Engine stop
Model..... Deutz / TCD 7.8 L6 EU Stage V	Air filter..... Dry air filter	• Cold start assistance
Design..... Turbocharger / intercooler	Battery ..... 2 x 12 V / 143 Ah	• Diesel pre-filter
Cylinder capacity ..... 476 in <sup>3</sup>	Generator ..... 28.5 V / 100 A	• Engine monitoring
Number of cylinders ..... 6	Starter..... 24 V / 4.0 kW	

## HYDRAULIC SYSTEM

• AWE 5 system (Load sensing)	• Pipe break protection valves for lifting and articulated cylinders	• Operating modes:
• Load limit controlled high-performance pump	• Proportional grab and grab rotating function	F1 (Fine)
• Fuel-efficient flow-on-demand control	• 3 circuits for additional consumer loads possible	F2 (Eco)
• Sensitive, proportional, independent control	• Max. oil flow..... 2 x 100 gpm	F3 (Power)
• Primary and secondary protection against overload	• Max. operating pressure ..... 5,221 PSI	• Accumulator for emergency lowering of the arm system
• Suction valves for all work functions	• Cylinder end position damping	• Load-limit control

## SWING ASSEMBLY

• Axial piston motor with priority valve	• Automatically controlled multi-disc brake	• Swing torque ..... 120 960 lbf ft
• Planetary transmission	• Two, two-stage valves	• Max. swing speed ..... 5.2 rpm

## TRACTION DRIVE AND BRAKES

• Variable displacement motor	• Automotive traveling and cruise control:	• Tractive force..... 32,597 lbf
• Manual gearbox	• Max. speed ..... 9.9 mph	• Gradeability ..... 5.0 %
• Double-acting brake valve	• Off-road speed ..... 3.1 mph	• Dual-circuit brake system ..... Drum brake
• Travel direction pre-selection via switch in joystick	• Crawling speed..... 0.6 mph	• Parking brake ..... Spring-loaded brake

## UNDERCARRIAGE

• Steering axle with automatic oscillating axle locking	• Heavy duty axles	• STD tires: Mitas 12.00-20
• Additional axis locking via left joystick	• Toolbox in undercarriage	

# WORKING EQUIPMENT 520MH

## DRIVER'S CAB

<ul style="list-style-type: none"> <li>• Meets latest safety standards (ROPS)</li> <li>• Extra large entry zone</li> <li>• Spacious leg room</li> <li>• Radio preparation with mute function</li> <li>• Ready for electric cooling box</li> <li>• Different options for storage, compartment for documents</li> <li>• Heat-absorbing glass, tinted windows</li> <li>• Excellent all-way visibility</li> <li>• Bottle holder</li> </ul>	<b>DRIVER'S SEAT:</b> <ul style="list-style-type: none"> <li>• Comfort seat with headrest</li> <li>• Arm rests and lumbar support</li> <li>• Seat adjustable separately from console</li> <li>• Air suspension</li> <li>• Heated</li> <li>• Horizontal and vertical suspension</li> <li>• Lumbar support</li> </ul>	<b>MONITORING:</b> <ul style="list-style-type: none"> <li>• Operating data display screen</li> <li>• Automatic system for monitoring, warning and storage of data</li> <li>• Rear view security camera</li> <li>• Right side camera</li> </ul>
	<b>CONTROL:</b> <ul style="list-style-type: none"> <li>• Ergonomic joysticks with proportional slide control</li> <li>• Slim steering column, height and tilt adjustable</li> <li>• Indicators, controls and operating switches are clearly arranged</li> <li>• Swing axle lock in the left joystick</li> </ul>	<b>CLIMATE CONTROL:</b> <ul style="list-style-type: none"> <li>• Automatic climate control</li> <li>• Excellent air distribution through optimally arranged nozzles</li> <li>• Refrigerant R134a</li> </ul>
		<b>SOUND LEVELS:</b> <ul style="list-style-type: none"> <li>• ISO 6396 (L<sub>p</sub>A) in driver's cab ..... 70 dB(A)</li> <li>• 2000/14 EG (L<sub>w</sub>A) ambience level ..... 102 dB(A)</li> </ul>

## ADDITIONAL EQUIPMENT

<ul style="list-style-type: none"> <li>• Beacon light</li> <li>• Gear protection</li> <li>• Cabin Sliding door</li> <li>• Cab protection guard</li> <li>• Cab elevation</li> <li>• Joystick steering</li> <li>• 270° camera system</li> <li>• LED working lights</li> </ul>	<ul style="list-style-type: none"> <li>• Alarm-signal while driving</li> <li>• Auxiliary heating with water circuit</li> <li>• Automatic working brake</li> <li>• Switch hydraulic attachment kit, supports separately at front and rear</li> <li>• Hydraulic add-on kit, switch supports axially separately</li> <li>• Proportional control of supports by slide in joystick</li> <li>• Automatically controlled and monitored electric central lubrication system for uppercarriage and arm equipment</li> <li>• Premium Driver seat (Actimo Evolution)</li> </ul>	<ul style="list-style-type: none"> <li>• Electric cooling box</li> <li>• Radio with USB</li> <li>• GPS/GSM telemetric system for monitoring of operating data, consumption, position</li> <li>• Biodegradable oil</li> <li>• Refueling pump</li> </ul>
		<b>Other additional equipment:</b> See price list <b>Special options:</b> upon request

## FILL CAPACITIES

• Fuel tank .....243 gal	• Engine oil .....5.5 gal	• Hydraulics system .....370 gal
• Cooling system ..... 14 gal	• Hydraulic tank ..... 190 gal	• Ad Blue ..... 13 gal

## OPERATING WEIGHTS

	MONOBLOCK BOOM 32' 2" (C94.5i)	MONOBLOCK BOOM 39' 8" (C94.6i) / (C94.16iD)
	Stick 24' 7" (D94.15i)	Stick 30' 4" (D94.16i)
4 support outriggers	116,845 lbs	119,050 lbs
1 m pylon	121,254 lbs	123,459 lbs
2 m pylon	123,459 lbs	125,664 lbs

Operating weight incl. driver, fuel, lubricants and coolant plus 3 307 lbs for attachments

## ATTACHMENTS (SELECTION)

	Bucket F415	Bucket F418	Trench digger G644
Capacity SAE	23.7 in <sup>3</sup>	32.5 in <sup>3</sup>	19.8 in <sup>3</sup>
Cutting width	2' 9"	3' 7"	6' 7"

## DO THE RIGHT JOB

### FULL STEAM AHEAD

Get your cargo handling moving. In times of rapid growth in the transport sector you need handling equipment with which you can work fast.

#### Particularly good for port use:

- Low costs per tonne thanks to fast and responsive operation and low-maintenance processing.
- High handling capacity thanks to enormous lifting power.
- Arm construction specially designed to clear ships' sides.
- Cab system with Vario cab.
- Can be supplied with pylon upon request.

### RECYCLING & SCRAP

### PORTS



## STABILITY



- Here the new undercarriage with moving pads and new ascent to get more comfortable in the cabin.
- New outrigger pads for increased stability again.

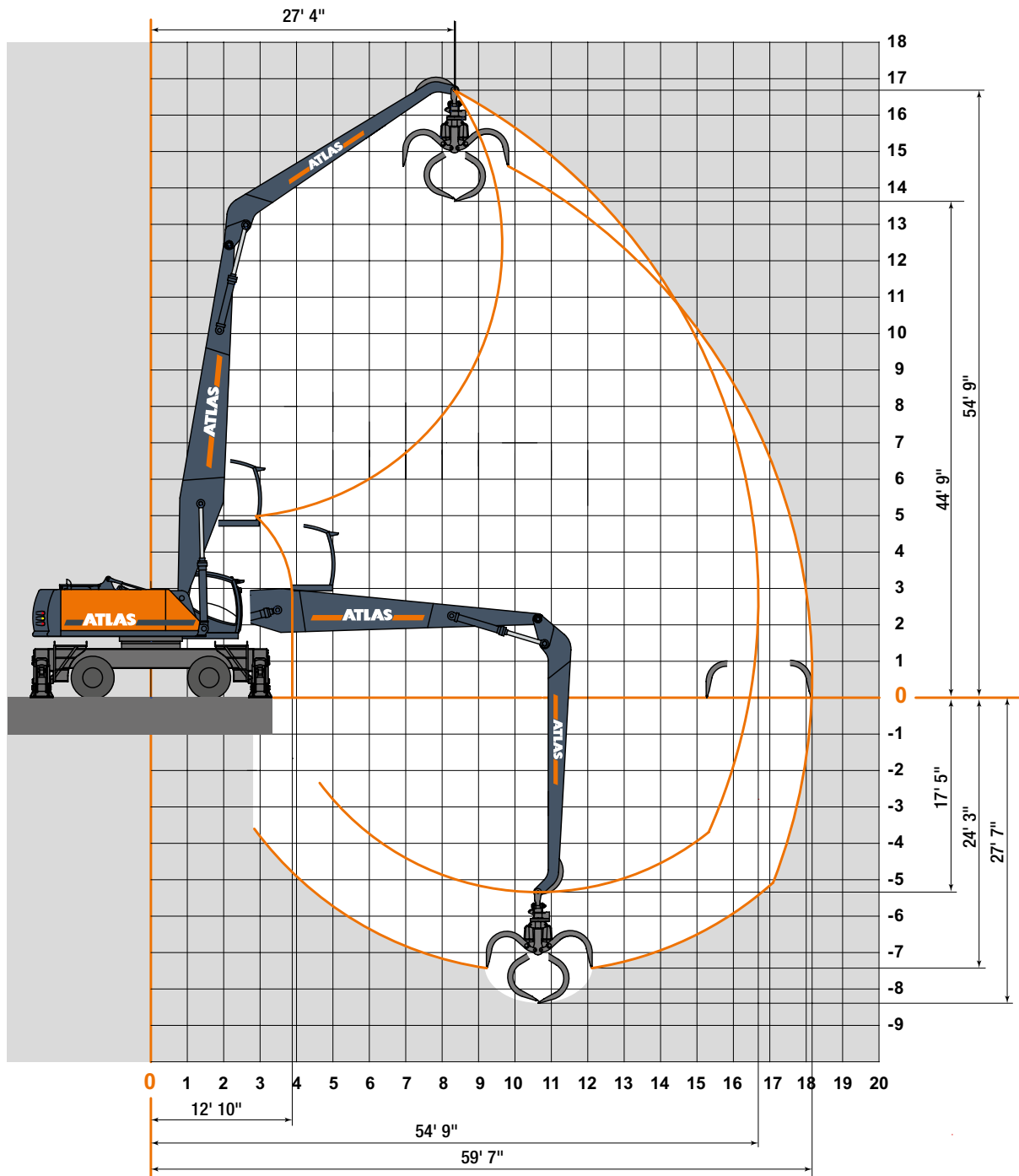


## RELIABLE – BECAUSE EVERY MINUTE COUNTS

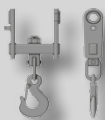
**Our market leadership is based on our well-proven technology tried and tested a thousand times over in the most arduous applications. High-tensile steels, robust electric and electronic components as well as excellent workmanship in all hydraulic components ensure that the material handler is the reliable heart on any construction site.**

# WORKING RANGES 520MH

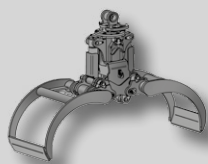
Loading boom 32' 2" (C94.5i) with Stick 24' 7" (D94.15i)



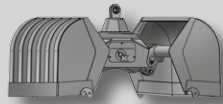
## Attachments



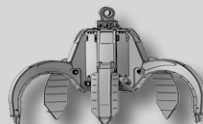
Load hook



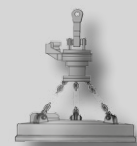
Log grab



Clamshell grab



Orange peel grab



Load lifting magnet

# LIFTING CAPACITIES 520MH

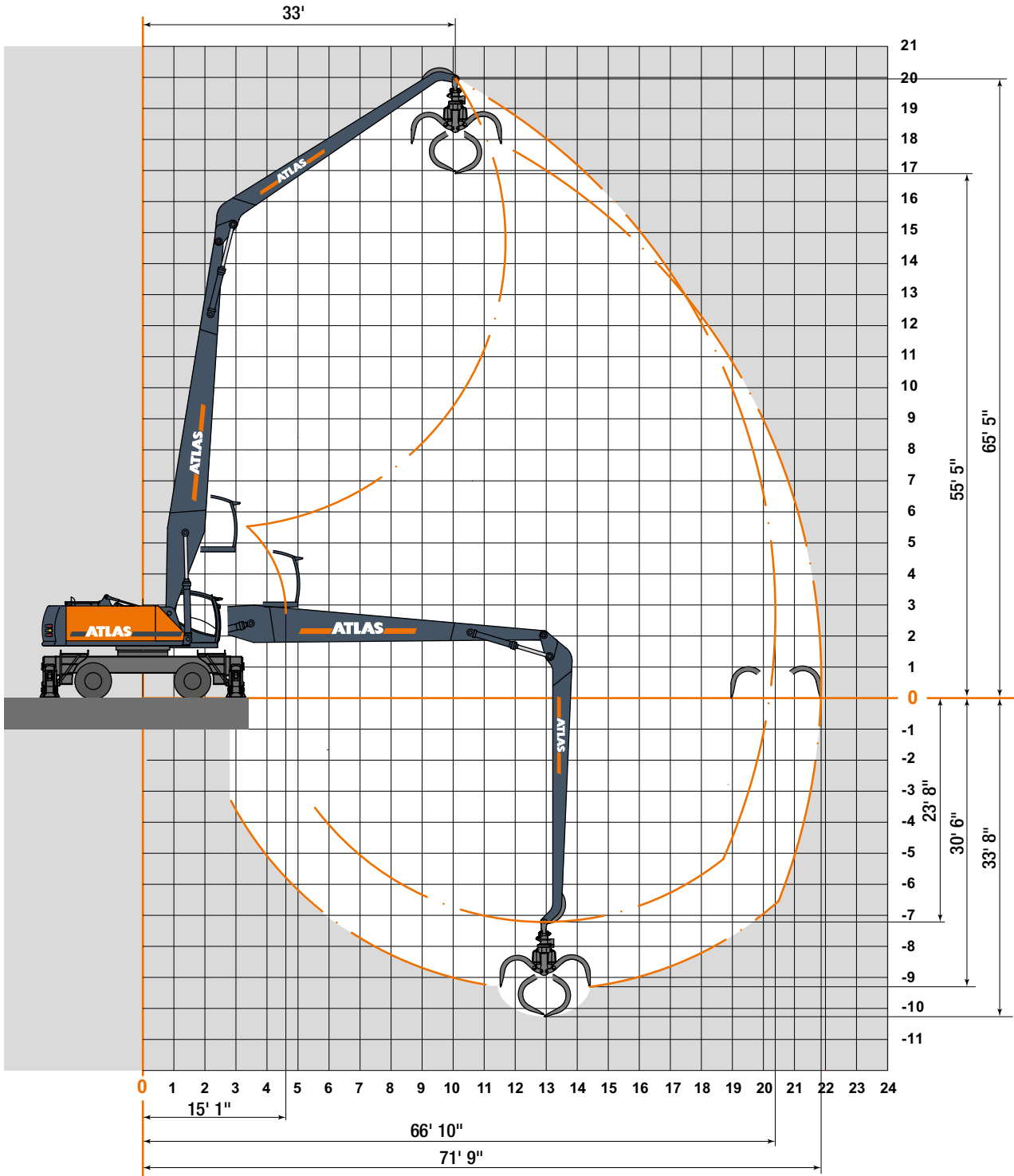
## Lifting Capacities Loading boom 32' 2" (C94.5i) with Stick 24' 7" (D 94.15i), Max. reach 54' 9"

HEIGHT		19' 8"		24' 7"		29' 6"		34' 5"		39' 4"		44' 3"		49' 3"	
		FRONT	LATERAL	FRONT	LATERAL	FRONT	LATERAL	FRONT	LATERAL	FRONT	LATERAL	FRONT	LATERAL	FRONT	LATERAL
49' 3"	outriggers down							17 417	17 417						
	outriggers up							17 417	15 212*						
44' 3"	outriggers down							16 976	16 976	16 094	16 094				
	outriggers up							16 976	15 653*	15 432*	12 346*				
39' 4"	outriggers down							16 755	16 755	15 873	15 873				
	outriggers up							16 755	15 653*	15 432*	12 346*				
34' 5"	outriggers down							17 196	17 196	15 873	15 873	14 991	14 991		
	outriggers up							17 196	15 432*	15 432*	12 346*	12 566*	9 921*		
29' 6"	outriggers down							17 637	17 637	16 314	16 314	15 212	15 212	14 330	14 330
	outriggers up							17 637	15 212*	15 212*	12 125*	12 566*	9 700*	10 362*	7 937*
24' 7"	outriggers down					20 723	20 723	18 519	18 519	16 976	16 976	15 653	15 653	14 551	14 551
	outriggers up					20 723	18 739*	18 519*	14 771*	14 991*	11 684*	12 346*	9 480*	10 141*	7 937*
19' 8"	outriggers down			26 015	26 015	22 267	22 267	19 621	19 621	17 637	17 637	16 094	16 094	14 771	14 771
	outriggers up			26 015	23 589*	22 267	17 857*	17 857*	14 110*	14 551*	11 244*	11 905*	9 259*	9 921*	7 716*
14' 9"	outriggers down	36 597	36 597	28 881	28 881	24 030	24 030	20 723	20 723	18 298	18 298	16 535	16 535	14 991	14 991
	outriggers up	36 597	29 762*	27 999*	21 826*	21 385*	16 755*	16 976*	13 228*	13 889*	10 803*	11 684*	9 039*	9 700*	7 496*
9' 10"	outriggers down	41 447	41 447	31 747	31 747	25 794	25 794	21 826	21 826	19 180	19 180	16 976	16 976	15 212	15 212
	outriggers up	35 274*	26 676*	26 015*	19 842*	20 283*	15 653*	16 314*	12 566*	13 448*	10 362*	11 244*	8 598*	9 480*	7 275*
4' 11"	outriggers down	12 787	12 787	33 731	33 731	27 117	27 117	22 708	22 708	19 621	19 621	17 196	17 196	15 432	15 432
	outriggers up	12 787	12 787	24 471*	18 298*	19 180*	14 551*	15 653*	11 905*	13 007*	9 921*	10 803*	8 157*	9 259*	7 055*
0	outriggers down	10 362	10 362	30 865	30 865	27 999	27 999	23 369	23 369	20 062	20 062	17 417	17 417	15 432	15 212*
	outriggers up	10 362	10 362	23 149*	17 196*	18 298*	13 889*	14 991*	11 244*	12 566*	9 480*	10 582*	7 937*	9 039*	6 834*
- 4' 11"	outriggers down	11 244	11 244	25 133	25 133	27 999	27 999	23 369	23 369	20 062	20 062	17 196	17 196	14 991	14 991
	outriggers up	11 244	11 244	22 487*	16 535*	17 637*	13 228*	14 551*	10 803*	12 125*	9 039*	10 362*	7 716*	9 039*	6 614*
- 9' 10"	outriggers down	13 448	13 448	24 692	24 692	27 337	27 337	22 928	22 928	19 621	19 621	16 755	16 755	14 330	14 330
	outriggers up	13 448	13 448	22 267*	16 314*	17 417*	13 007*	14 330*	10 582*	11 905*	9 039*	10 362*	7 716*	9 039*	6 614*
-14' 9"	outriggers down			26 455	26 455	25 794	25 794	21 826	21 826	18 519	18 519	15 653	15 653		
	outriggers up			22 267*	16 314*	17 417*	13 007*	14 110*	10 582*	11 905*	8 818*	10 362*	7 716*		

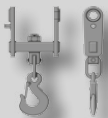
The specified max. loading capacities in pounds (lbs) include a stability of 25% or are calculated at 87% of the hydraulic lifting power, as per ISO10567. These values are applicable at the tip of the arm (without tipping cylinder and reversing linkage) with optimum positioning of the corresponding arm system. Weights of attached load carrying accessories (grab, magnet, load hook, etc.) are not included with the load carrying values. \* Value limited due to excavator stability.

# WORKING RANGES 520MH

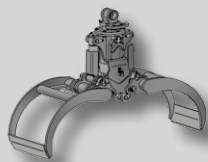
Loading boom 39' 8" (C94.6i) with Stick 30' 4" (D94.16i)



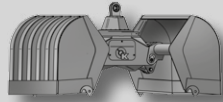
## Attachments



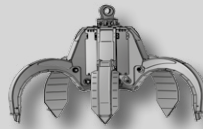
Load hook



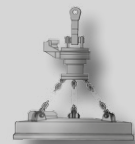
Log grab



Clamshell grab



Orange peel grab



Load lifting magnet

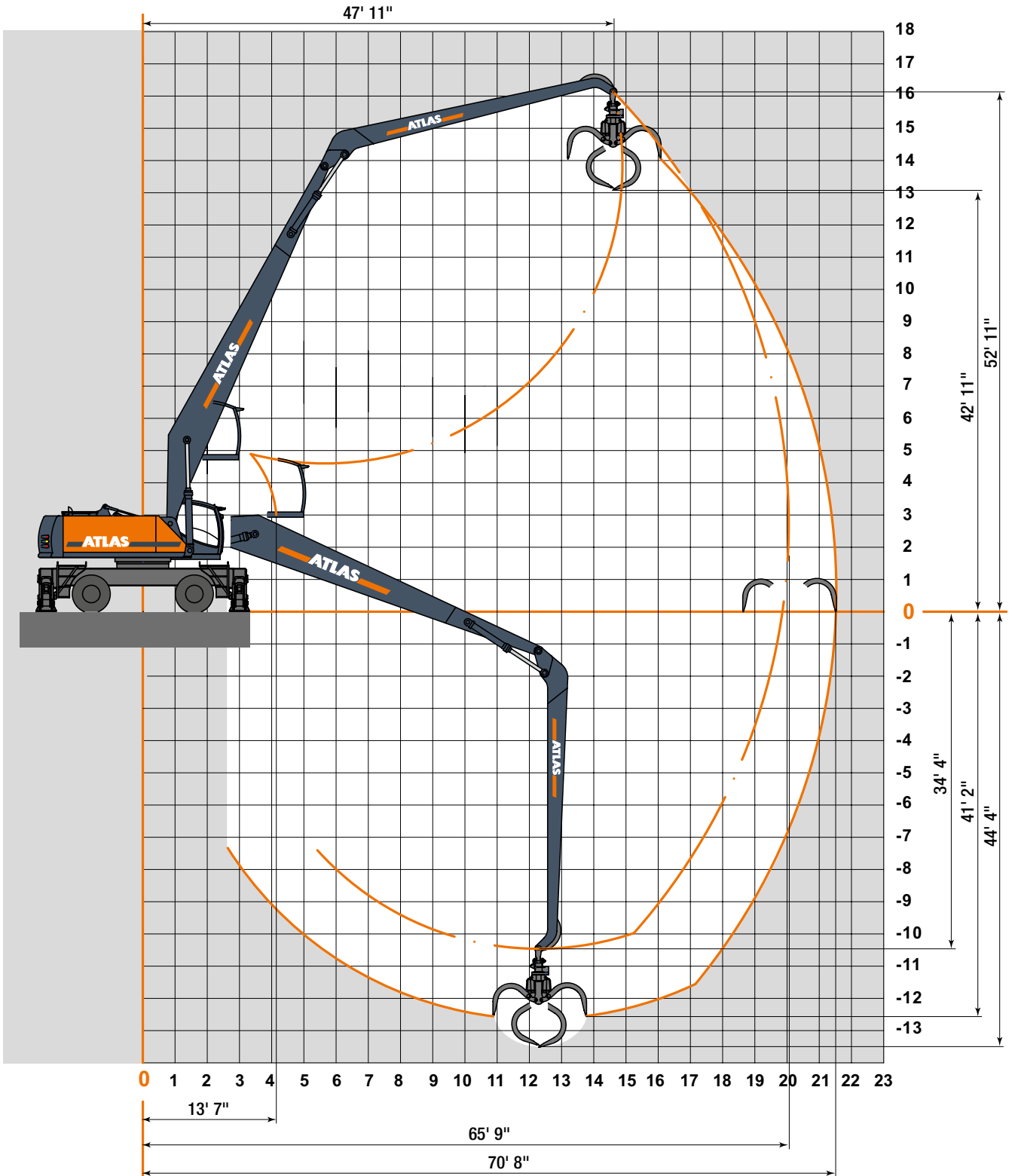
# LIFTING CAPACITIES 520MH

HEIGHT		Lifting Capacities Loading boom 39' 8" (C94.6i) with Stick 30' 4" (D 94.16i). Max. reach 71' 8"																			
		19' 8"		24' 7"		29' 6"		34' 5"		39' 4"		44' 3"		49' 3"		54' 2"		59' 1"		63' 11.7"	
		FRONT	LATERAL	FRONT	LATERAL	FRONT	LATERAL	FRONT	LATERAL	FRONT	LATERAL	FRONT	LATERAL	FRONT	LATERAL	FRONT	LATERAL	FRONT	LATERAL	FRONT	LATERAL
59' 1"	outriggers down																				
	outriggers up																				
54' 2"	outriggers down											11 684	11 684								
	outriggers up											11 684	10 141*								
49' 3"	outriggers down											11 464	11 464	10 803	10 803						
	outriggers up											11 464	10 141*	10 582*	8 157*						
44' 3"	outriggers down											11 464	11 464	10 803	10 803	10 141	10 141				
	outriggers up											11 464	10 141*	10 582*	8 157*	8 598*	6 393*				
39' 4"	outriggers down											11 684	11 684	10 803	10 803	10 141	10 141				
	outriggers up											11 684	10 141*	10 362*	8 157*	8 598*	6 393*				
34' 5"	outriggers down									13 007	13 007	11 905	11 905	11 023	11 023	10 141	10 141	9 480	9 480		
	outriggers up									13 007	12 346*	11 905	9 921 *	10 362*	7 937*	8 378*	6 393*	7 055*	5 071*		
29' 6"	outriggers down									13 669	13 669	12 346	12 346	11 244	11 244	10 362	10 362	9 480	9 480		
	outriggers up									13 669	11 905*	12 125*	9 480*	9 921 *	7 716*	8 157*	6 173*	6 834*	5 071*		
24' 7"	outriggers down							15 873	15 873	14 110	14 110	12 787	12 787	11 464	11 464	10 582	10 582	9 700	9 700	9 039	9 039
	outriggers up							15 873	14 110*	14 110	11 244*	11 684*	9 039*	9 700*	7 275*	7 937*	5 952*	6 614*	4 850*	5 512*	3 748*
19' 8"	outriggers down			23 810	23 810	19 842	19 842	16 976	16 976	14 771	14 771	13 228	13 228	11 905	11 905	10 803	10 803	9 921	9 921	9 039	9 039
	outriggers up			23 810	22 267*	19 842	16 755*	16 976	13 228*	13 669*	10 582*	11 244*	8 378*	9 259*	6 834*	7 716*	5 732*	6 393*	4 630*	5 512*	3 748*
14' 9"	outriggers down	34 172	34 172	26 015	26 015	21 164	21 164	17 857	17 857	15 432	15 432	13 669	13 669	12 125	12 125	11 023	11 023	9 921	9 921	9 039	9 039
	outriggers up	34 172	26 896*	26 015*	19 842*	19 842*	15 212*	15 873*	12 125*	12 787*	9 700*	10 582*	7 937*	8 818*	6 393*	7 496*	5 291*	6 173*	4 409*	5 291*	3 527*
9' 10"	outriggers down	5 071	5 071	28 219	28 219	22 487	22 487	18 739	18 739	16 094	16 094	14 110	14 110	12 346	12 346	11 244	11 244	10 141	10 141	9 039	9 039
	outriggers up	5 071	5 071	23 149*	17 196*	18 078*	13 669*	14 551*	11 023*	11 905*	8 818*	9 921 *	7 275*	8 378*	5 952*	7 055*	5 071*	5 952*	4 189*	5 071*	3 527*
4' 11"	outriggers down	17 857	17 857	13 448	13 448	23 369	23 369	19 401	19 401	16 535	16 535	14 330	14 330	12 566	12 566	11 244	11 244	10 141	10 141	9 039	9 039
	outriggers up	17 857	17 857	13 448	13 448	16 755*	12 125*	13 669*	9 921*	11 244*	8 157*	9 480 *	6 834*	7 937*	5 732*	6 834*	4 630*	5 732*	3 968*	4 850*	3 307*
0	outriggers down			9 259	9 259	24 030	24 030	19 842	19 842	16 755	16 755	14 551	14 551	12 787	12 787	11 244	11 244	10 141	10 141	9 039	9 039
	outriggers up			9 259	9 259	15 432*	11 023*	12 787*	9 039*	10 582*	7 496*	8 818 *	6 393*	7 496*	5 291*	6 393*	4 409*	5 512*	3 748*	4 850*	3 086*
- 4' 11"	outriggers down			8 818	8 818	20 062	20 062	19 842	19 842	16 976	16 976	14 551	14 551	12 787	12 787	11 244	11 244	9 921	9 921	8 818	8 818
	outriggers up			8 818	8 818	14 551*	10 141*	12 125*	8 378*	10 141*	7 055*	8 598 *	5 952*	7 275*	5 071*	6 173*	4 189*	5 512*	3 527*	4 630*	3 086*
- 9' 10"	outriggers down			9 480	9 480	18 298	18 298	19 621	19 621	16 755	16 755	14 551	14 551	12 566	12 566	11 023	11 023	9 700	9 700		
	outriggers up			9 480	9 480	14 110*	9 700 *	11 464*	7 937*	9 700 *	6 614*	8 157 *	5 512*	7 055*	4 850*	6 173*	3 968*	5 291*	3 527*		
-14' 9"	outriggers down			10 803	10 803	18 519	18 519	18 960	18 960	16 314	16 314	14 110	14 110	12 125	12 125	10 582	10 582	9 259	9 259		
	outriggers up			10 803	10 803	13 889*	9 480 *	11 244*	7 716*	9 480 *	6 393*	7 937 *	5 512*	6 834*	4 630*	5 952*	3 968*	5 291*	3 527*		
-19' 8"	outriggers down					19 621	19 621	18 078	18 078	15 432	15 432	13 448	13 448	11 464	11 464	9 921	9 921				
	outriggers up					13 889*	9 480 *	11 244*	7 716*	9 480 *	6 393*	7 937 *	5 291*	6 834*	4 630*	5 952*	3 968*				

The specified max. loading capacities in pounds (lbs) include a stability of 25% or are calculated at 87% of the hydraulic lifting power, as per ISO10567. These values are applicable at the tip of the arm (without tipping cylinder and reversing linkage) with optimum positioning of the corresponding arm system. Weights of attached load carrying accessories (grab, magnet, load hook, etc.) are not included with the load carrying values. \* Value limited due to excavator stability.

# WORKING RANGES 520MH

Loading boom 39' 8" (C94.6iB) with Stick 30' 4" (D94.16i)



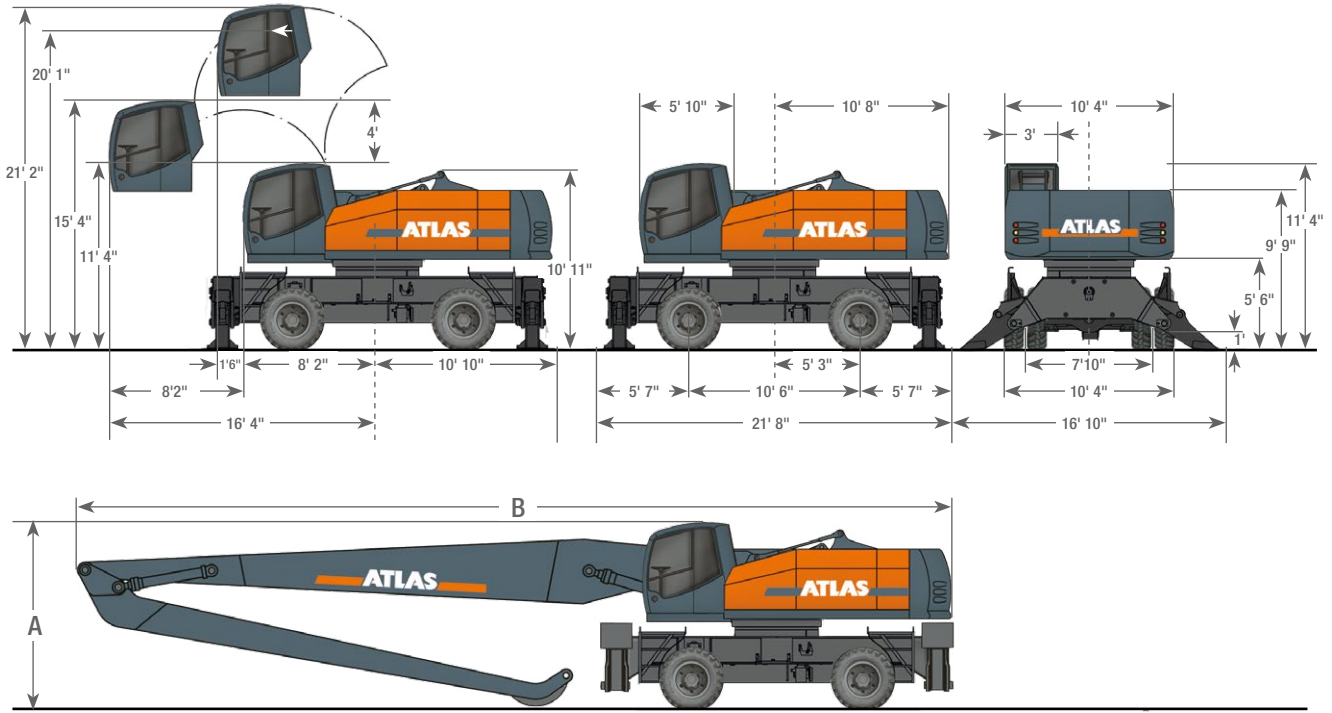
# LIFTING CAPACITIES 520MH

Lifting Capacities Loading boom 39' 8" (C94.6iD) with Stick 30' 4" (D 94.16i). Max. reach 70' 8"																					
HEIGHT		19' 8"		24' 7"		29' 6"		34' 5"		39' 4"		44' 3"		49' 3"		54' 2"		59' 1"		63' 11.7"	
		FRONT	LATERAL	FRONT	LATERAL	FRONT	LATERAL	FRONT	LATERAL	FRONT	LATERAL	FRONT	LATERAL	FRONT	LATERAL	FRONT	LATERAL	FRONT	LATERAL	FRONT	LATERAL
59' 1"	outriggers down																				
	outriggers up																				
54' 2"	outriggers down															8,378*	8,378*				
	outriggers up															8,378	6,834				
49' 3"	outriggers down															8,378*	8,378*				
	outriggers up															8,378	6,834				
44' 3"	outriggers down															8,598*	8,598*	8,378*	8,378*		
	outriggers up															8,598	6,614	7,275	5,291		
39' 4"	outriggers down														9,259*	9,259*	8,818*	8,818*	8,598*	8,598*	
	outriggers up														9,259*	7,937	8,598	6,393	7,055	5,291	
34' 5"	outriggers down														9,700*	9,700*	9,259*	9,259*	8,818*	8,818*	
	outriggers up														9,700*	7,716	8,378	6,173	6,834	5,071	
29' 6"	outriggers down									12,346*	12,346*	11,244*	11,244*	10,362*	10,362*	9,700*	9,700*	9,039*	9,039*	8,598*	8,598*
	outriggers up									12,346*	11,023	11,244*	8,818	9,480	7,275	7,937	5,952	6,614	4,850	5,512	3,968
24' 7"	outriggers down					17,857*	17,857*	15,212*	15,212*	13,228*	13,228*	11,905*	11,905*	10,803*	10,803*	10,141*	10,141*	9,480*	9,480*	8,818*	8,818*
	outriggers up					17,857*	15,653	15,212*	12,566	13,228	10,141	11,023	8,378	9,039	6,834	7,716	5,512	6,614	4,630	5,512	3,748
19' 8"	outriggers down	5,291*	5,291*	25,133*	25,133*	20,062*	20,062*	16,755*	16,755*	14,330*	14,330*	12,787*	12,787*	11,464*	11,464*	10,582*	10,582*	9,700*	9,700*	9,039*	9,039*
	outriggers up	5,291*	5,291*	23,810	17,637	18,739	14,110	14,991	11,244	12,346	9,259	10,362	7,716	8,598	6,393	7,275	5,291	6,173	4,409	5,291	3,527
14' 9"	outriggers down			13,448*	13,448*	21,826*	21,826*	18,078*	18,078*	15,432*	15,432*	13,448*	13,448*	12,125*	12,125*	11,023*	11,023*	10,141*	10,141*	9,259*	9,259*
	outriggers up			13,448*	13,448*	16,976	12,566	13,889	10,141	11,464	8,378	9,700	7,055	8,157	5,952	7,055	4,850	5,952	4,189	5,071	3,307
9' 10"	outriggers down			9,700*	9,700*	23,369*	23,369*	19,180*	19,180*	16,314*	16,314*	14,110*	14,110*	12,566*	12,566*	11,464*	11,464*	10,362*	10,362*	9,480*	9,480*
	outriggers up			9,700*	9,700*	15,873	11,244	13,007	9,259	10,803	7,716	9,039	6,614	7,716	5,512	6,614	4,630	5,732	3,748	4,850	3,307
4' 11"	outriggers down			9,259*	9,259*	20,283*	20,283*	20,062*	20,062*	16,976*	16,976*	14,771*	14,771*	13,228*	13,228*	11,684*	11,684*	10,582*	10,582*	9,700*	9,700*
	outriggers up			9,259*	9,259*	14,991	10,362	12,346	8,598	10,141	7,275	8,598	6,173	7,496	5,071	6,393	4,409	5,512	3,748	4,850	3,086
0	outriggers down			9,921*	9,921*	18,739*	18,739*	20,723*	20,723*	17,637*	17,637*	15,432*	15,432*	13,448*	13,448*	11,905*	11,905*	10,803*	10,803*		
	outriggers up			9,921*	9,921*	14,330	9,921	11,684	8,157	9,921	6,834	8,378	5,732	7,055	4,850	6,173	4,189	5,291	3,527		
- 4' 11"	outriggers down			11,244*	11,244*	18,960*	18,960*	21,164*	21,164*	17,857*	17,857*	15,432*	15,432*	13,669*	13,669*	12,125*	12,125*	11,023*	10,803*		
	outriggers up			11,244*	11,244*	14,110	9,700	11,464	7,937	9,480	6,614	8,157	5,512	7,055	4,630	5,952	3,968	5,291	3,527		
- 9' 10"	outriggers down			12,346*	13,007*	20,062*	20,062*	21,164*	21,164*	18,078*	18,078*	15,653*	15,653*	13,669*	13,669*	12,125*	12,125*				
	outriggers up			12,346*	12,346	13,889	9,480	11,244	7,716	9,480	6,393	7,937	5,291	6,834	4,630	5,952	3,968				
-14' 9"	outriggers down			14,771*	14,771*	21,826*	21,826*	20,944*	20,944*	17,857*	17,857*	15,432*	15,432*	13,448*	13,448*	11,684*	11,684*				
	outriggers up			14,771*	12,566	14,110	9,700	11,244	7,716	9,480	6,393	7,937	5,291	7,055	4,630	5,952	3,968				
-19' 8"	outriggers down					23,810*	23,810*	20,062*	20,062*	17,196*	17,196*	14,771*	14,771*	12,787*	12,787*						
	outriggers up					14,330	9,921	11,464	7,937	9,480	6,614	8,157	5,512	7,055	4,630						

The specified max. loading capacities in pounds (lbs) include a stability of 25% or are calculated at 87% of the hydraulic lifting power, as per ISO10567. These values are applicable at the tip of the arm (without tipping cylinder and reversing linkage) with optimum positioning of the corresponding arm system. Weights of attached load carrying accessories (grab, magnet, load hook, etc.) are not included with the load carrying values. \* Value limited due to hydraulics.

# DIMENSION 520MH

## 520MH Transport position



A	TRANSPORT HEIGHT	B	TRANSPORT LENGTH
	Loading boom 32' 2" (C94.5i) with Stick 24' 7" (D94.15i).....11' 4"		Loading boom 32' 2" (C94.5i) with Stick 24' 7" (D94.15i).....46' 3"
	Loading boom 39' 8" (C94.6i) with Stick 30' 4" (D94.16i).....11' 4"		Loading boom 39' 8" (C94.6i) with Stick 30' 4" (D94.16i).....53' 10"
	Loading boom 39' 8" (C94.6id) with Stick 30' 4" (D94.16i).....11' 5"		Loading boom 39' 8" (C94.6id) with Stick 30' 4" (D94.16i).....53' 3"



520MH-US (1) Effective date: 04/2022. Product specifications and prices are subject to change without notice or obligation. The photographs and/or drawings in this document are for illustrative purposes only. Refer to the appropriate Operator's Manual for instructions on the proper use of this equipment. Failure to follow the appropriate Operator's Manual when using our equipment or to otherwise act irresponsibly may result in serious injury or death. The only warranty applicable to our equipment is the standard written warranty applicable to the particular product and sale and Atlas makes no other warranty, express or implied. The only warranty applicable to our equipment is the standard written warranty applicable to the particular product and sale and Atlas makes no other warranty, express or implied. Products and services listed may be trademarks, service marks or trade-names of Atlas GmbH and/or its subsidiaries. All rights are reserved. Atlas® is a registered trademark of Atlas GmbH. Ref. no. 6214263

### **GANDERKESEE FACTORY**

Atlas GmbH  
Atlasstraße 6  
D-27777 Ganderkesee,  
Germany

Tel.: +49 (0) 4222 954 0  
Fax: +49 (0) 4222 954 220  
E-mail: [info@atlasgmbh.com](mailto:info@atlasgmbh.com)  
[www.atlasgmbh.com](http://www.atlasgmbh.com)



### **VECHTA FACTORY**

Atlas GmbH  
Theodor-Heuss-Str. 3  
D-49377 Vechta  
Germany

T: +49 (0) 4441 954 0  
F: +49 (0) 4441 954 299  
E-mail: [info@atlasgmbh.com](mailto:info@atlasgmbh.com)  
[www.atlasgmbh.com](http://www.atlasgmbh.com)



### **DELMENHORST FACTORY**

Atlas GmbH  
Stedinger Straße 324  
D-27751 Delmenhorst  
Germany

T: +49 (0) 4221 49 10  
F: +49 (0) 4221 49 14 43  
E-mail: [info@atlasgmbh.com](mailto:info@atlasgmbh.com)  
[www.atlasgmbh.com](http://www.atlasgmbh.com)

### **ATLAS CRANES UK LTD NATIONAL SALES & SERVICE FACILITY**

Wharfedale Road,  
Euroway Trading Est.  
Bradford, England BD4 6SL  
United Kingdom

T: +44 8444 99 66 88  
F: +44 1274 65 37 85  
E-mail: [atlasuk@atlasgmbh.com](mailto:atlasuk@atlasgmbh.com)  
[www.atlas-cranes.co.uk](http://www.atlas-cranes.co.uk)  
[www.atlasgmbh.com](http://www.atlasgmbh.com)



**SINCE 1919**  
**ATLAS**

